

Pilot Operated Relief - Venting

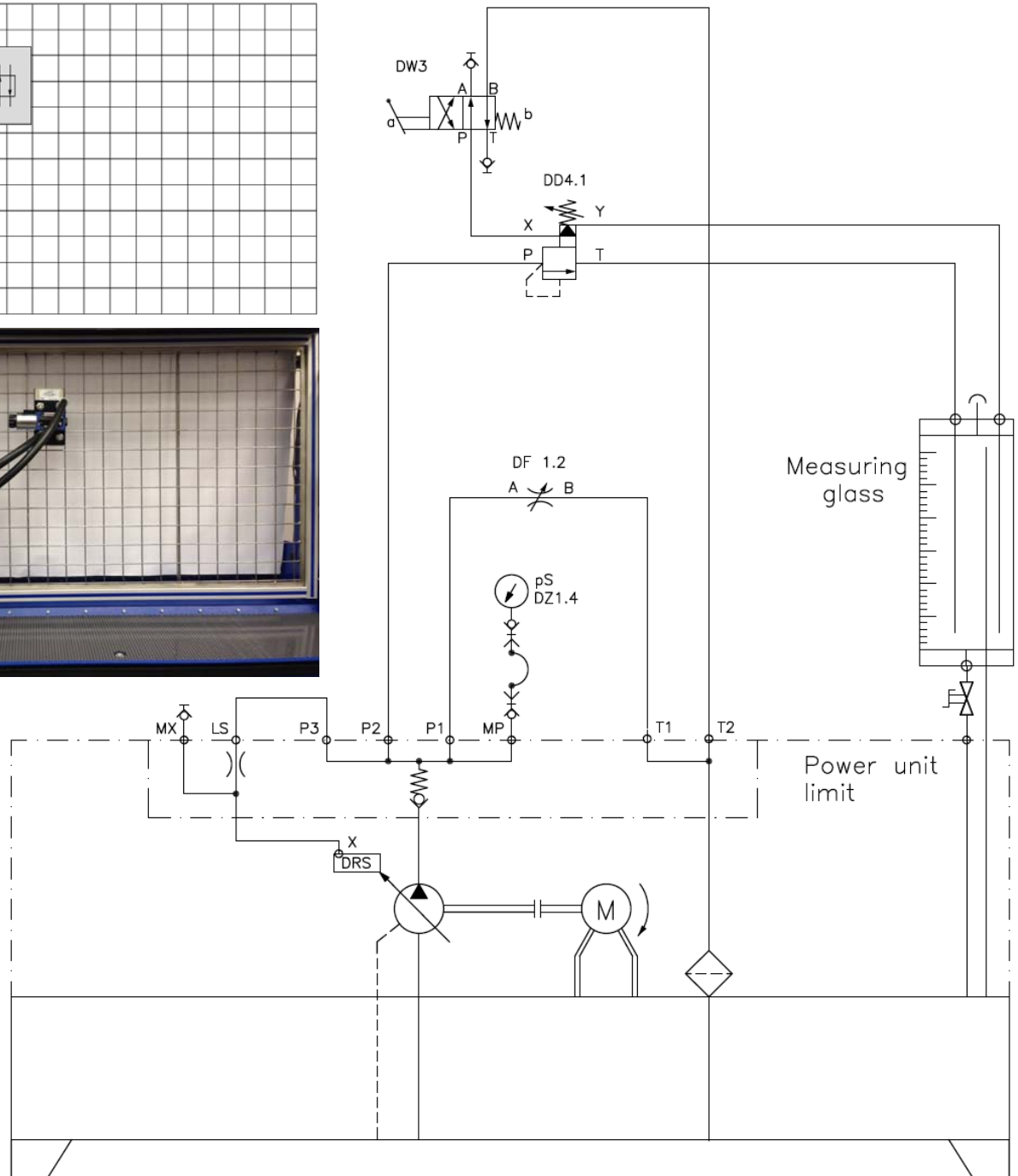
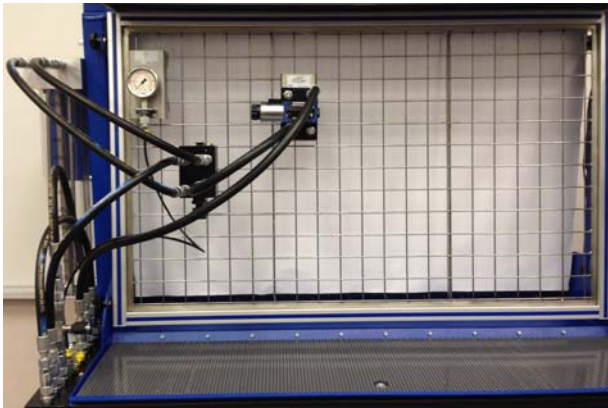
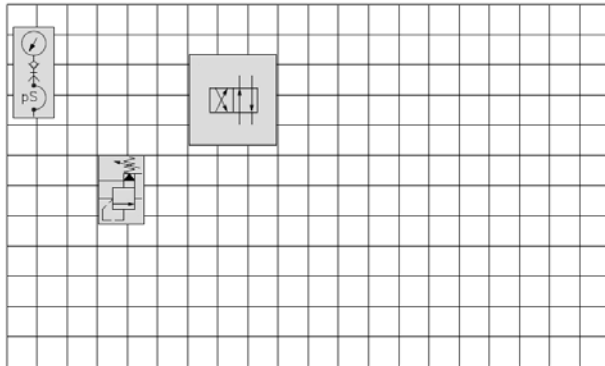
Part I

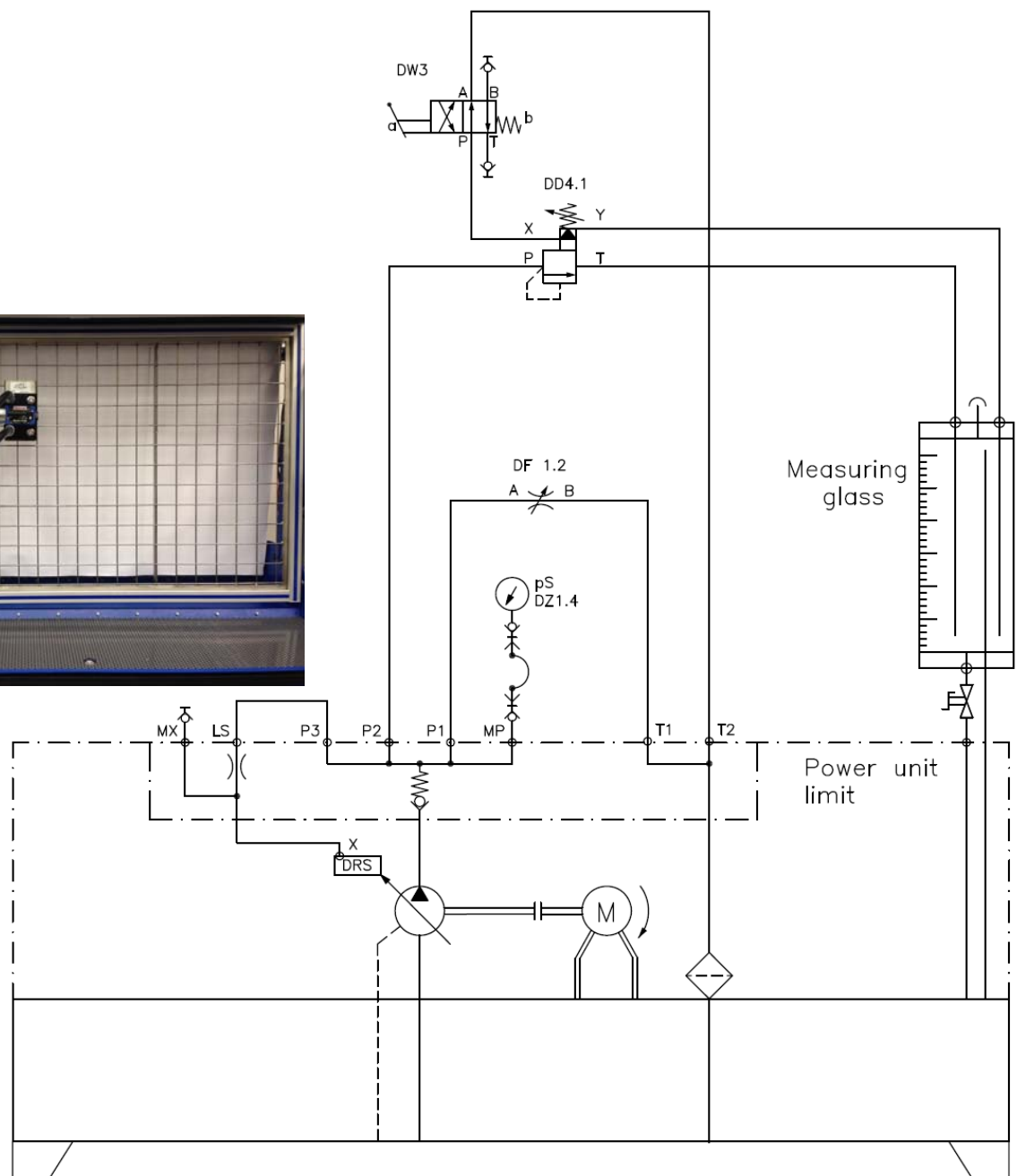
- Connect the circuit shown.
- Start the hydraulic trainer and close the throttle valve (DF1.2) completely
- Adjust the pressure relief valve (DD4.1) until 600 psi is shown at the gauge.
- Shift the handle of the directional control valve and explain what happens

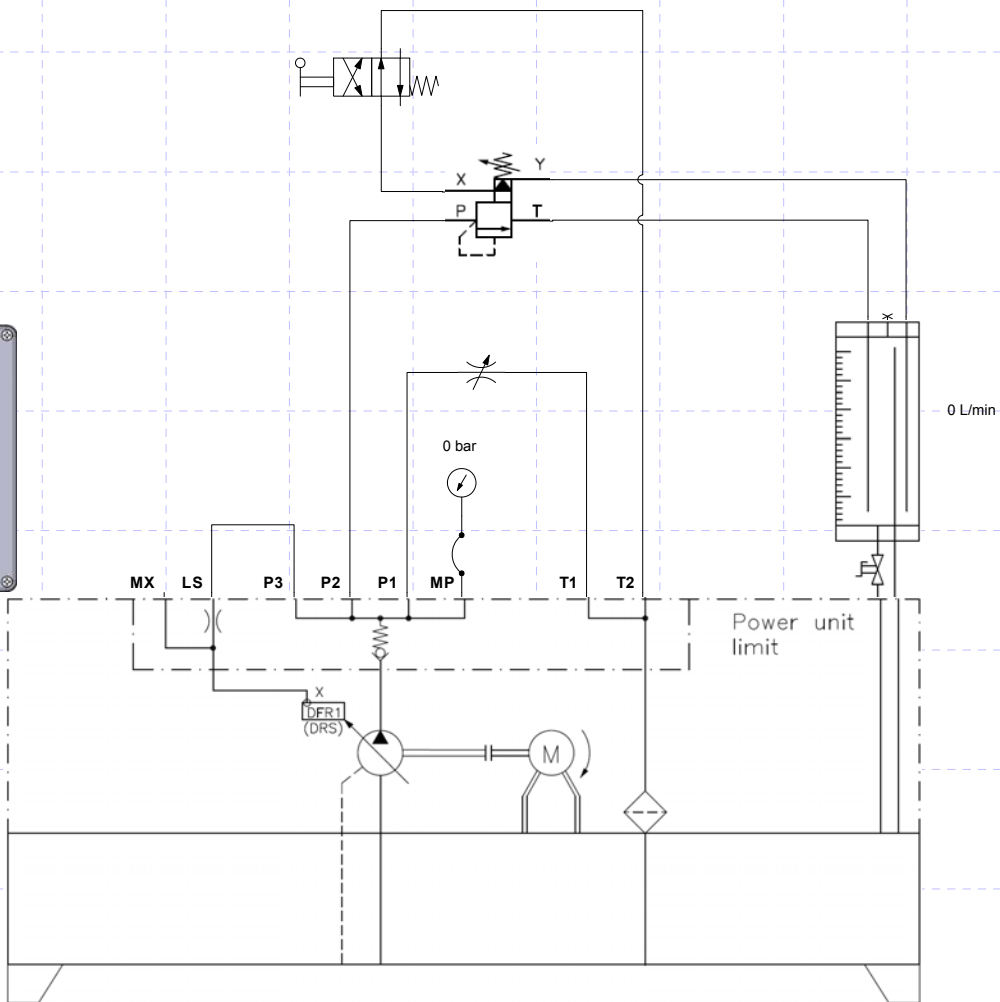
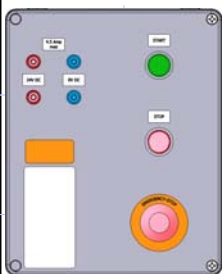
In the normal condition 600 psi is seen at the pressure gauge.

When the directional control valve is shifted the pressure at the gauge drops almost to zero.

The pump flow is now unloaded directly back to tank







Pilot Operated Relief - Venting Part II